

SUCCESS CASES OF THE STATE OF MINAS GERAIS/BRAZIL

SUSTAINABLE DEVELOPMENT

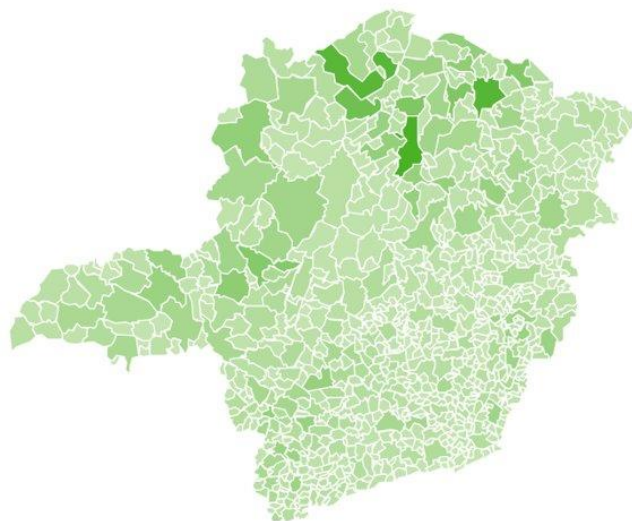
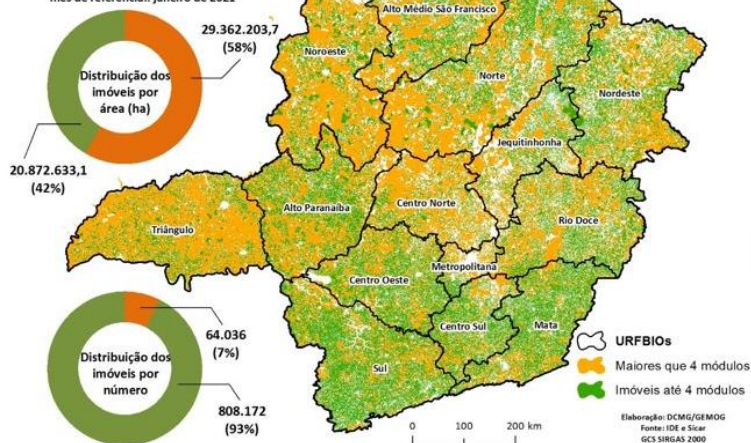
Rural Environmental Registry (CAR): Analysis experience in Minas Gerais

Federal Law No. 12,651/2012, through its article 29, established the Rural Environmental Registry - CAR, a nationwide electronic public registry, mandatory for all rural properties. Its purpose is to integrate environmental information relating to rural properties and possessions, constituting a database for the purposes of control, monitoring, environmental planning, in addition to combating deforestation.

The state of Minas Gerais already has 1,039,101 registrations in the CAR, and the analysis stage of these registrations began in 2022, with the publication of SEMAD/IEF Joint Resolution No. 3,132/2022. It is important to mention that there are two types of analysis: individualized and dynamic analysis. In the first, a technical team examines and validates one CAR at a time, while the second is an automated analysis that can process the evaluation of thousands of registrations simultaneously. However, the second modality has limitations, being eligible for only part of the CARs.

Imóveis inscritos no CAR separados por módulos fiscais

mês de referência.: janeiro de 2021



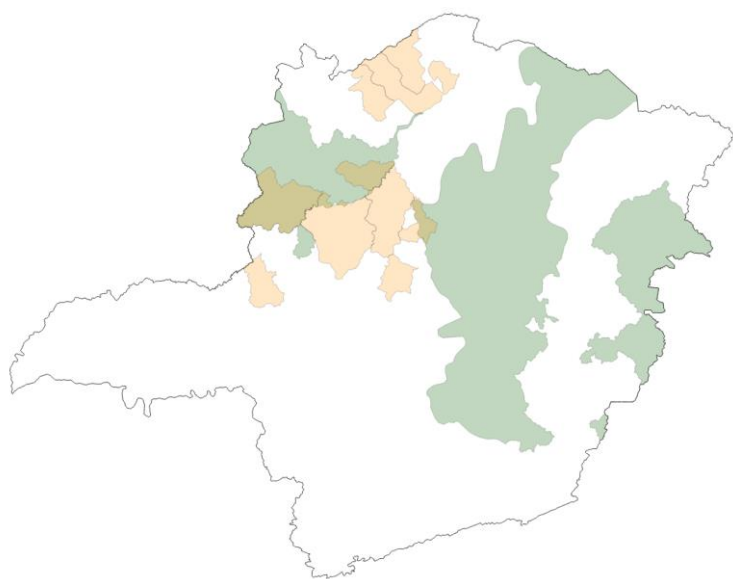
Considering the high number of records registered in Minas Gerais, the analysis of the CAR and the implementation of environmental regularization represent a significant challenge. Therefore, several actions, projects and partnerships have been implemented to raise resources and stimulate the analysis of CAR in the state. This includes team training, hiring technicians through specific projects and resources, as well as reviewing and developing regulations and procedures.

SUCCESS CASES OF THE STATE OF MINAS GERAIS/BRAZIL

SUSTAINABLE DEVELOPMENT

Rural Environmental Registry (CAR): Analysis experience in Minas Gerais

6,624 CARs have already been analyzed by October 23, 2023. At the beginning, the main areas of analysis are concentrated in the PAT (Territorial Action Plans), of which there are three in Minas Gerais: Capixaba-Geraes, Espinhaço Mineiro and Veredas-Goyaz-Geraes. In addition to the PAT areas, we are directing efforts to the municipalities that are part of the Minas Contra o Dematamento Program.



Priority areas for analysis: in green, areas of the Territorial Action Plans (PAT), in orange, area of the Minas Contra o Deforestation Program.

It is important to highlight that the CAR represents the first step towards environmental regularization, as it defines areas that require regularization within the scope of the Environmental Regularization Program (PRA). Therefore, the importance of advancing the analysis of this instrument is evident.



Environmental regularization instrument for rural properties in Minas Gerais