

# SUCCESS CASES OF THE STATE OF MINAS GERAIS/BRAZIL

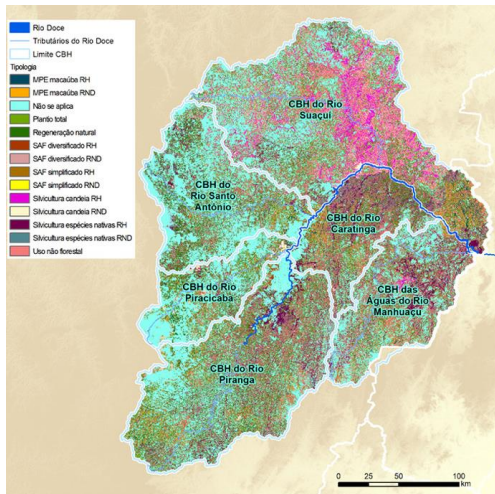
## CONSERVATION

### Restoration Opportunity Assessment Methodology - ROAM

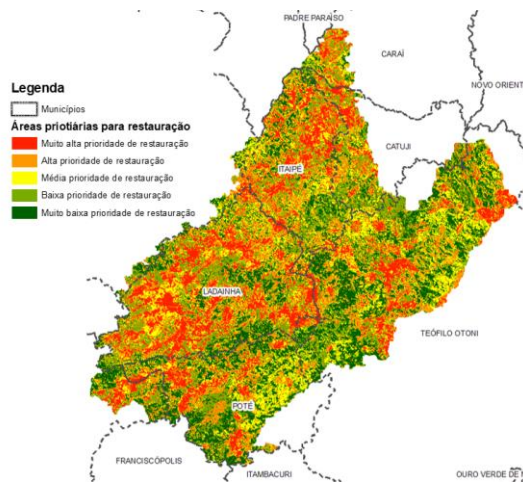
ROAM is a tool developed by the International Union for Conservation (IUCN) and the World Resources Institute (WRI) to identify opportunities for Forest Landscape Restoration – RPF.

At the same time as it favors the articulation of actors, its results guide governments and civil society in conducting and making decisions, aiming to gain scale in the RPF.

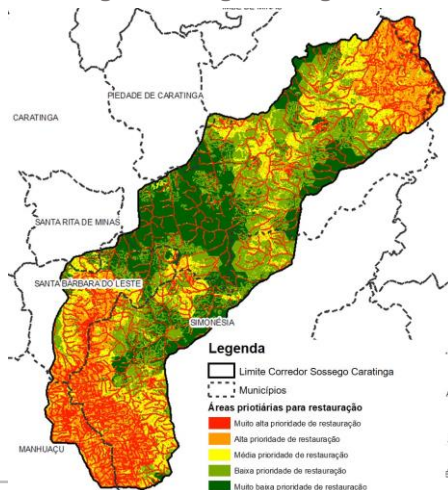
ROAM was applied, in a joint effort between several institutions (public, private and civil society), in the Minas Gerais portion of the Rio Doce basin, in the Environmental Protection Area – APA Mucuri and in the Sossego-Caratinga Ecological Corridor – CESC, with the State Forestry Institute and WRI Brasil as coordinators.



### Alto do Mucuri Environmental Protection Area



### Sossego-Caratinga Ecological Corridor



For more information [click here](#).